

**QUEENSLAND  
MUSEUM**  
PRESENTS

World  
Science  
Festival  
Brisbane

**March 25–29**

The **WONDER** of **WHY**

# **WORLD SCIENCE FESTIVAL BRISBANE**

**2020 PROGRAM**

Why is it  
so hard  
to switch  
to clean  
energy?

Why is  
tripping  
trending in  
medicine  
again?

Why is the blue planet  
running on empty?

Why does quantum theory  
give Einstein the spooks?

QUEENSLAND MUSEUM

# SPIDERS

THE EXHIBITION



© Jürgen Otto

Peacock Spider  
*Maratus pardus*

An exhibition developed & toured by the Australian Museum & Questacon - The National Science and Technology Centre



UNTIL  
**4 MAY**  
2020

**12 live species  
and 200  
specimens**

Discover the world of spiders,  
taking them from one of the most  
feared to the most fascinating  
creatures in Australia.

**BUY TICKETS**

at Queensland Museum,  
South Bank

#SpidersQM

## Love science?

Buy an Annual Pass and get  
12 months of unlimited entry  
to Queensland Museum's

## SparkLab

SCIENCENTRE

Queensland Museum, South Bank

[qm.qld.gov.au](http://qm.qld.gov.au)





## The Wonder of Why

From the moment we're born, we have an eager need to know 'why'. Why do we struggle to keep new year's resolutions? Why do clouds turn green before it hails? As curious creatures, it drives everything we do.

This year's festival celebrates the wonder of 'why', with a program placing the spotlight on insightful and challenging conversations and an escape to new and entertaining experiences.

As lifelong learners, we want you to enjoy your time at the festival and celebrate the wonder of 'why' with us. Find out more about the festival and the wonder of 'why' experiences taking place at World Science Festival Brisbane by visiting our website.

## Book Tickets

Book online at [worldsciencefestival.com.au](http://worldsciencefestival.com.au)

## Bundle 4+ Tickets and Save

Buy a bundle of 4 or more tickets to selected events in one transaction and receive 20% off!

Please note, this discount applies only to selected events. Visit [worldsciencefestival.com.au](http://worldsciencefestival.com.au) to find out more.

## Get Amongst the Action



Twitter [@WSFBrisbane](https://twitter.com/WSFBrisbane)

Facebook [@WorldScienceFestivalBrisbane](https://www.facebook.com/WorldScienceFestivalBrisbane)

Instagram [@WorldScienceFestivalBrisbane](https://www.instagram.com/WorldScienceFestivalBrisbane)

YouTube [@WorldScienceFestivalBrisbane](https://www.youtube.com/WorldScienceFestivalBrisbane)

Share your festival memories using:  
**#WSFB2020**

Correct at time of printing

## Contents

2	Welcome
4	About the Festival
5	Signature Conversations
6	Queensland Museum Free Events and Australian Cinémathèque, GOMA
7	Wednesday 25 March
8	Thursday 26 March
10	Friday 27 March
12	Saturday 28 March
14	Sunday 29 March
16	Environmental Program and Hatchery Crusaders
17	Tear out Program
18	City of Science Map
21	City of Science Participants and Events
22	Featured Participants
24	Participants
26	World Science Festival Queensland
36	Our Partners
37	Plan Your Festival Experience



# Welcome

## Welcome to the fifth annual World Science Festival Brisbane

At its heart, World Science Festival Brisbane celebrates human curiosity and a desire to understand the world around us, to challenge assumptions and to always ask why?

Now, more than ever, as we are faced with extreme global events is the time for us to stay informed, question the status quo and adapt how we live and interact with the world. We will focus on these extremes and adaptations in our conversation program in 2020.

World Science Festival Brisbane is also about delightful surprises. This year, for the first time our popular Street Science! program now called *City of Science* will be held across four days in the heart of Brisbane's Cultural Precinct. The new-look *City of Science* will meander from the River Terrace in front of the Queensland Art Gallery through Queensland Museum's iconic Whale Mall and on to the Knowledge Walk at State Library of Queensland ending outside Queensland Gallery of Modern Art. It will offer pockets to explore, rest and gather, connect with art installations and marvel at lighting activations.

Our regional program will also expand for the communities of Chinchilla, Gladstone, Toowoomba, Townsville and Ipswich, giving them opportunities to take part in an incredible line-up of science activities and events that will extend throughout the entire year.

Queensland Museum Network is proud to grow the World Science Festival Brisbane brand, but what we are even more proud of is the knowledge that we are inspiring a new generation of creators, innovators and leaders. All of this would not be possible though without the support of the Queensland Government and our generous partners—thank you.

For now, I encourage everyone to get involved, to explore, question and immerse yourself in this wonderful opportunity—there is truly so much waiting for you.

**Dr Jim Thompson**  
**Chief Executive Officer**  
**Queensland Museum Network**

## Acknowledgement of country

In keeping with the spirit of reconciliation and on behalf of Queensland Museum Network, we acknowledge the Traditional Custodians of the land that the festival is created and presented on. We recognise and pay respect to the first scientists and acknowledge the important contribution this unique wisdom provides to contemporary scientific thought. We acknowledge the deep and timeless relationship between Country and Aboriginal peoples and Torres Strait Islanders and pay respect to the Elders of the community and extend recognition to their descendants both past and present.

## World Science Festival

World Science Festival gathers great minds in science and the arts from around the world to events that allow people from all walks of life to engage with scientific discoveries. Through discussions, debates, theatre, interactive experiences and major outdoor events, the festival takes science out of the laboratory and into the streets, parks, museums and galleries in New York City and beyond.

The annual week-long festivals, which launched in New York in 2008, has collectively drawn **over 3.2 million visitors worldwide**, with millions more viewing the programs online.



## Welcome to the 2020 World Science Festival Brisbane

Science is the life blood of dynamic communities, innovative thinking and thriving economies. It ignites young minds, informs the world of today and sets an optimistic path to help shape our tomorrow — a vision shared by the Queensland Government in our *Engaging Queenslanders in Science Strategy* and delivered as part of the annual World Science Festival Brisbane.

The Queensland Government supports this landmark event, the only one produced outside of New York, as it brings people together to celebrate the wonders of science, explore ideas and debate the challenges confronting humankind.

This year we are presenting the largest regional program ever produced in the festival's history, along with a name change. The World Science Festival Queensland—for events beyond Brisbane—will offer an extended program so communities in Chinchilla, Gladstone, Toowoomba, Townsville and Ipswich can get hands-on with science.

Visitors of all ages can expect a big and bold program that will feed our curiosity and help explore the dynamic connection between science and our everyday world.

Since the first annual festival in 2016, the event has grown to become a major tourism drawcard in its own right, attracting more than 700,000 visitors injecting more than \$32 million into the state's economy. It is one of the many highlights on the *It's Live! in Queensland* events calendar, worth \$880 million to the state's economy in 2020.

It remains an exciting part of Curiosity Brisbane, a festival to celebrate creativity, innovation, science, technology and art in Queensland.

Queensland is Australia's innovation State, which is why the Queensland Government supports the Queensland Museum Network to present the World Science Festival Brisbane through Tourism and Events Queensland and the many festival partners.

Enjoy the festival and experience the scientific wonders of the world of today and what we can expect in the future. If you are a visitor to Brisbane, take some time to explore the many unique attractions in the region and throughout Queensland.

**The Honourable Anastacia Palaszczuk**  
Premier of Queensland and  
Minister for Trade

**The Honourable Leeanne Enoch MP**  
Minister for Environment and the  
Great Barrier Reef, Minister for  
Science and Minister for the Arts

**The Honourable Kate Jones MP**  
Minister for Innovation and Tourism  
Industry Development and Minister  
for Cross River Rail

As an Asia Pacific hub for science and innovation, our city is proud to support the World Science Festival Brisbane for a fifth year

Brisbane is one of the world's greatest cities. Our globally acclaimed research institutions and achievements in science and technology make Brisbane the perfect destination to host the brightest minds across Australia and internationally.

The festival has grown to be a popular fixture on Brisbane's annual events calendar, inviting residents and visitors to explore the possibilities and mysteries of our existence in fun and inspiring ways.

Clear blue skies and a relaxed and welcoming vibe make our city an inviting backdrop to explore this diverse program of events hosted across Brisbane's cultural precinct.

Complete your festival experience by discovering all there is to see and do in Brisbane including outdoor dining, river kayaking and bridge climbing, cultural attractions, peaceful parklands and sensational shopping.

Enjoy the World Science Festival Brisbane.

**Adrian Schrinner**  
Lord Mayor of Brisbane



## About the Festival

Hosted by Queensland Museum and celebrating its fifth year, World Science Festival Brisbane is Australia's most popular science festival, welcoming thousands from around the world and spanning across six Queensland locations. The festival in 2020 will unravel an extraordinary science journey with a new and improved program and the return of much-loved favourites.

### City of Science



#### Presented with BHP Foundation

This year the ever popular Street Science! will become City of Science, with a new format that winds all the way from Queensland Museum, along the Brisbane River and up to the Maiwar Green at GOMA. With more than 50 activity providers families will discover magnificent marine life, fascinating physics, new technologies and eco-art workshops.

#### Osmosis Stage

The Osmosis Stage is back with free arts and science shows. Located on the Maiwar Green, highlights include STEM superstar Lisa Harvey-Smith, a silent disco and adorable *Trinket the Robot* puppet shows.

### Conversations and Events



In 2020, experts come together to explore the contribution science makes to our very existence as they examine, explore and celebrate what we know, what we don't and those working to find out more. This year will see over 20 Signature Conversations and Conversation events, presented with shows covering everything from Australia's energy future to what cities will look like as technology evolves and populations increase. From *Hunting the Cosmic Dawn* to *Dr Karl* and *Night of the Nerds*, there is something for everyone.

### The Nucleus



As the sun sets, The Nucleus will come alive with a variety of programming for adults to enjoy! Grab a drink from the licensed bar and enjoy a variety of programming including conversations, live music and more at the festival's designated hang out spot.

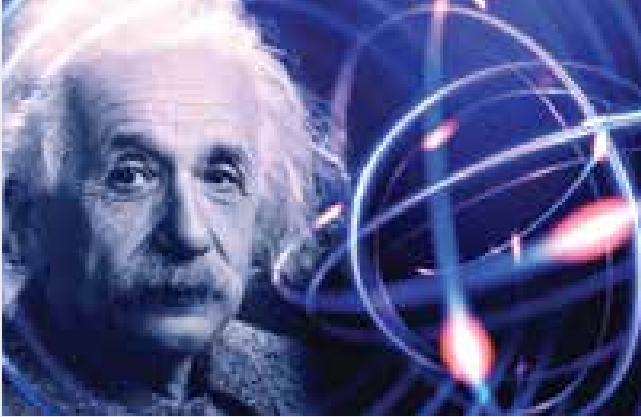
See a variety of chill programming, from conversations intersecting sex, love and the brain in humans and in the avian kingdom, to a discussion on the vision for greener public art and design. Whether you're looking to meet a friend before an event or just a Friday afternoon drink, The Nucleus has got it covered!

### Queensland Museum Events



Queensland Museum is the beating heart of the festival, with talks from our leading researchers and scientists. Some of the best and unique pieces of the State Collection will be on display, and learn what it takes to capture the magic of some of Queensland's most revered and stunning landscapes by renowned Queensland Museum photographers. Be sure to pay a visit to the brand new *Spiders – the Exhibition*.

With an unparalleled line-up of speakers and performers, the festival's Signature Conversations take a deep dive into the dynamic connection between science and our everyday world. Explore the greatest challenges and ideas we face today and in the future.



### Einstein and the Quantum: Unravelling the Mysteries of Space and Time

**Wednesday 25 March | 6:30pm–8pm | Concert Hall, QPAC | \$35**

**Presenter:** Brian Greene

Einstein famously worked on the big ideas of space and time, but he was also instrumental in developing quantum mechanics for understanding the microworld. Experiments since have confirmed his seemingly disparate theories, and now a bold new proposal suggests that quantum entanglement may actually stitch the very fabric of spacetime itself.

**Presented with World Science Festival New York**



### Running the Planet Without Costing the Earth

**Thursday 26 March | 7:30pm–9pm | Concert Hall, QPAC | \$35**

**Moderator:** Paul Willis

**Participants:** Fanny Boulaire, Alexander Colsmann, Mark Paterson, Michelle Taylor

Humans need energy, and lots of it. But, our ever-warming climate and ever-increasing population means a move from fossil-fuel to clean and green sources, and quickly. Join our energetic experts to shine a renewable light on Australia's energy future and what it will take for us all to get there.

**Presented with QUT**



### Hunting the Cosmic Dawn

**Friday 27 March | 7:30pm–9pm | Concert Hall, QPAC | \$35**

**Moderator:** Jonathan Webb

**Participants:** Nichole Barry, Tamara Davis, Lisa Harvey-Smith

Living on a terrestrial planet and orbiting a star that is just one of the hundreds of billions in our galaxy can make one feel insignificant. But to an astrophysicist, it is fascinating. How did it all begin, how will it end and are we alone? It's like, totally cosmic.

**Presented with The University of Queensland**



### Cities 2060: Thriving not Just Surviving

**Sunday 29 March | 11:30am–1pm | Concert Hall, QPAC | \$35**

**Moderator:** Niraj Lal

**Participants:** Joerg Baumeister, Josef Hargrave, Tony Matthews

Cities have changed remarkably in the last few decades, and the next few will be no different as populations swell and climate change bites. Granted, we are unlikely to "meet the Jetsons", but what will the city of the future look like and how will life differ as environments change and technology evolves?

**Presented with Griffith University**

## Brian Greene



Brian Greene is a professor of physics and mathematics at Columbia University and is widely regarded for his groundbreaking discoveries in mathematical physics and superstring theory, including the co-discoveries of mirror symmetry and topology change.

He is the author of *The Elegant Universe*, *The Fabric of the Cosmos*, and *The Hidden Reality*, which have collectively spent 65 weeks on the New York Times Bestseller list and sold more than two million copies worldwide. His newest book, *Until the End of Time*, will be published in February, 2020.

Brian Greene has made frequent media appearances on programs such as *The Late Show with Stephen Colbert*, and has hosted two NOVA specials, based on *The Elegant Universe* and *The Fabric of the Cosmos*, which were nominated for four Emmy Awards and won a George Foster Peabody Award. He has also had cameo appearances in Hollywood films *Maze*, *Frequency*, and the *Last Mimzy*, and played himself in an episode of *The Big Bang Theory*.

Brian Greene is the director of Columbia's Center for Theoretical Physics and with producer Tracy Day, he is co-founder of the World Science Festival.

## Queensland Museum

During the festival, Queensland Museum researchers, scientists and photographers showcase some of their unique and fascinating work, and share insights about their areas of expertise that have taken years of patience, knowledge and skills to perfect.

See below a selection of free Queensland Museum events. Check online for the full program.

### Queensland Museum: Science Drawing Room

Thursday 26 – Sunday 29 March | 9:30am–4:30pm | Level 4, Inventory, Queensland Museum

### Queensland Museum: Animal Adaptions to Extreme Events

Wednesday 25 – Sunday 29 March | 9:30am–4:30pm | Level 2, Theatre, Queensland Museum

### Queensland Museum: Insects

Friday 27 March | 9:30am–4:30pm | Level 2, Void, Queensland Museum

Recommended for 13 years and over.

### Queensland Museum: Palaeontology

Saturday 28 – Sunday 29 March | 9:30am–4:30pm | Level 2, Void, Queensland Museum

## Australian Cinémathèque, GOMA

'All in the Mind' spotlights films that consider extreme mental states and our need to understand how our mind works.

Presented in partnership with the Australian Cinémathèque, GOMA, the films in this selection lean into our curiosity towards psychological conditions, our desire to tinker with our brains through psychedelic means, and how these explorations nudge at our fears of medical treatment for mental ill health.

### American Psycho (2000)

Thursday 26 March | R18+ 6pm–8pm | GOMA | \$10

### System Crasher (2019)

Thursday 26 March | MA15+ 8:15pm–10:15pm | GOMA | \$10

### Dosed (2019)

Friday 27 March | M 6pm–7:45pm | GOMA | \$10

### Fear and Loathing in Las Vegas (1998)

Friday 27 March | R18+ 8pm–10pm | GOMA | \$10

### A Clockwork Orange (1971)

Saturday 28 March | R18+ 12:20pm–2:40pm | GOMA | \$10

### One Flew Over the Cuckoo's Nest (1975)

Saturday 28 March | M 3pm–5:25pm | GOMA | \$10

### Hunting for Hedonia (2019)

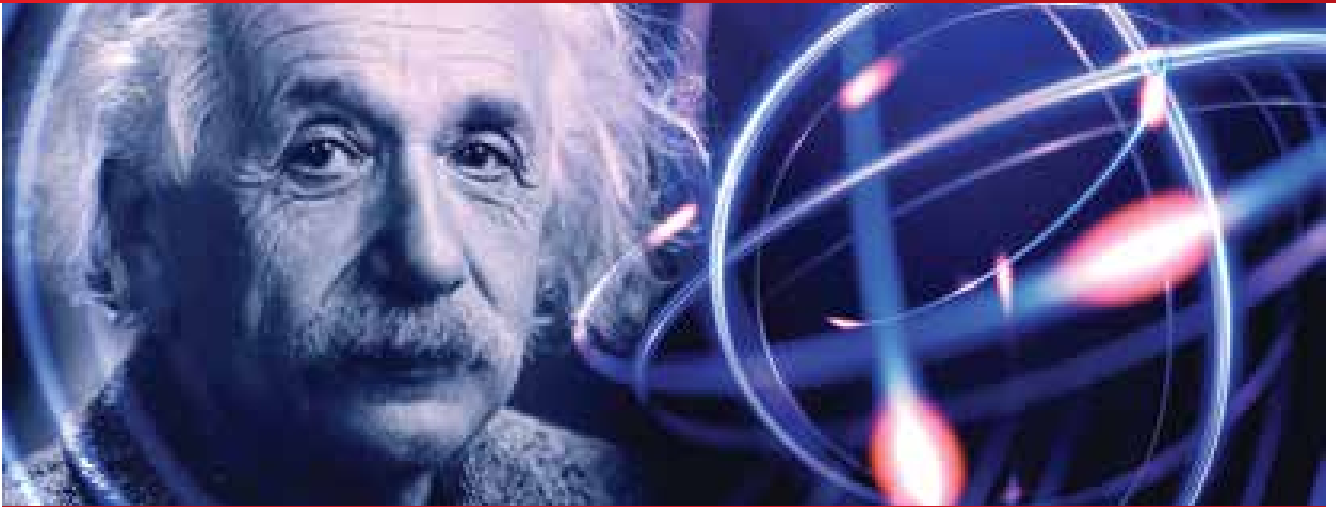
Sunday 29 March | MA15+ 12:30pm–1:40pm | GOMA | \$10

### Awakenings (1990)

Sunday 29 March | M 2:30pm–4:30pm | GOMA | \$10



## Conversations and Events



### Einstein and the Quantum: Unravelling the Mysteries of Space and Time

6:30pm–8pm | Concert Hall, QPAC | \$35

**Presenter: Brian Greene**

Einstein famously worked on the big ideas of space and time, but he was also instrumental in developing quantum mechanics for understanding the microworld. Experiments since have confirmed his seemingly disparate theories, and now a bold new proposal suggests that quantum entanglement may actually stitch the very fabric of spacetime itself.

**Presented with World Science Festival New York**

### The Nucleus

FREE



#### Nonsemble

5pm–6pm

Nonsemble inhabit a space between contemporary classical and adventurous pop music, resulting in a diverse output that ranges from sprawling and evocative modern compositions to meticulously crafted chamber-pop.

#### Notey and Noisy: A Sound Science Mathemusical

8pm–9:15pm

Notey likes single frequencies. Noisy likes as many frequencies as possible, but the perfect note and noise have always eluded them. Join this musical duo for a Sound Science Mathemusical like no other!

### The Hatchery

FAMILY

FREE - TICKETED



World Science Festival Brisbane's annual turtle hatching is an important conservation initiative allowing intimate access to Australia's Loggerhead turtles. Visitors can get a rare glimpse of hatching turtles in their incubation chambers and the first moments of their lives as they meet a seawater environment in specially designed tanks.

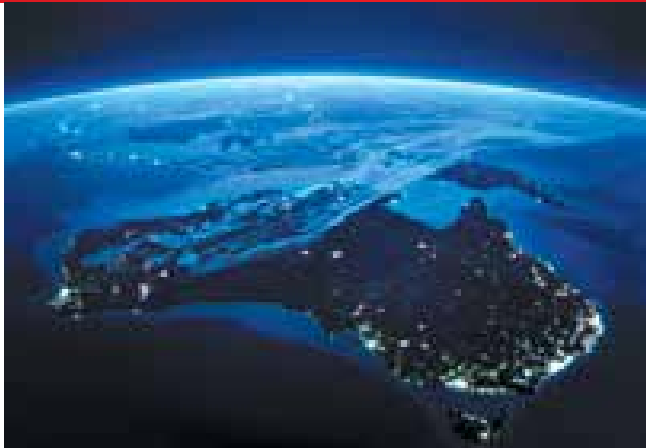
**30 minute sessions, 9am–4pm |**

**Whale Mall, Queensland Museum**

**This event is free - ticketed, please book online.**

Queensland Museum is welcoming, accessible and inclusive. With advance notice, we can accommodate individual needs.

## Conversations and Events



### Running the Planet Without Costing the Earth

7:30pm–9pm | Concert Hall, QPAC | \$35

**Moderator:** Paul Willis

**Participants:** Fanny Boulaire, Alexander Colsmann, Mark Paterson, Michelle Taylor

Humans need energy, and lots of it. But, our ever-warming climate and ever-increasing population means a move from fossil-fuel to clean and green sources, and quickly. Join our energetic experts to shine a renewable light on Australia's energy future and what it will take for us all to get there.

**Presented with QUT**



### Beyond the Emu

5:30pm–7pm | slq Auditorium 1, State Library of Queensland | \$35

**Moderator:** Rhianna Patrick **Curator:** Marcus Hughes

**Participants:** Jeff Aniba-Waia, Margaret Harvey, Lynette Wallworth

Bruce Pascoe's ground breaking work, *Dark Emu*, shifted the national conversation — acknowledging the sophisticated environmental sciences and sustainable practices of Australia's First Peoples. But how and where can those cultural knowledge systems and practices be implemented as contemporary interventions in a world on the brink?



### Start Your Day With a Dose of Happiness

8:00am–8:45am | Cafe Muse, Queensland Museum | \$30 | Includes light breakfast

**Moderator:** Paul Willis

**Participants:** David Burton, Jane Shakespeare-Finch

Everyone has something that makes them happy. It could be puppies or rainbows or even chocolate. But why? What goes on inside our brains when we are happy? Join our panel of experts to unpack the science behind our optimistic selves, and start your day with a dose of happiness.



### Queensland's Extreme Environments: With Gary Cranitch

3:30pm–4:30pm | Level 2, Theatre, Queensland Museum | \$18

**Moderator:** Bernie Hobbs

**Participant:** Gary Cranitch

Queensland contains some of the most revered and stunning landscapes in the world, and capturing their magic takes tremendous skill and years of patience. Queensland Museum has exactly that in photographer Gary Cranitch. From the vast coastline to the inland borders, Gary's images will leave you feeling awed, delighted and proud.

## Schools Program

### The Hatchery

**Multiple sessions | Whale Mall, Queensland Museum**

Get a rare glimpse of Australia's precious Loggerhead turtles hatching in their incubation chambers and the first moments of their lives as they meet a seawater environment in specially designed tanks.

### Cool Jobs

**10am–11am | Concert Hall, QPAC**

Come face-to-face with amazing scientists doing some of the most amazing jobs on the planet. These uber-cool scientists share their fascinating journeys of land, sea and fire.

### Pioneers in Science: Lisa Harvey-Smith

**11:30am–12:30pm | slq Auditorium 1, State Library of Queensland | \$10**

High school students get the chance to meet Professor Lisa Harvey-Smith – award winning astrophysicist, author, presenter of ABC's *Stargazing Live*, member of the Australian Space Agency advisory group and recently appointed as the Federal Government's inaugural Women in STEM Ambassador.

### Museum Curator's Apprentice

**11:30am–1pm | Queensland Museum**

The Apprentice programs are small, hands-on workshops where scientists, technologists and innovators educate curious minds on the workings and wonders of their chosen fields.

### Cool Careers

**1:30pm–2:30pm | slq Auditorium 1, State Library of Queensland**

Hear three incredible researchers talk about how, where and why their STEM career journey unfolded. Find out what it's really like to work in their scientific field, warts and all, and why they wouldn't be doing anything else in the world.

## The Nucleus

FREE

### Science + Art: Unlikely Alliances

**7:30pm–8:30pm**

Six minds, three perfect pairs and an absolute collision of creativity and science. Hear three amazing stories of art and science partnerships that are truly out of this world.

### Science + Art: Festival Footprints

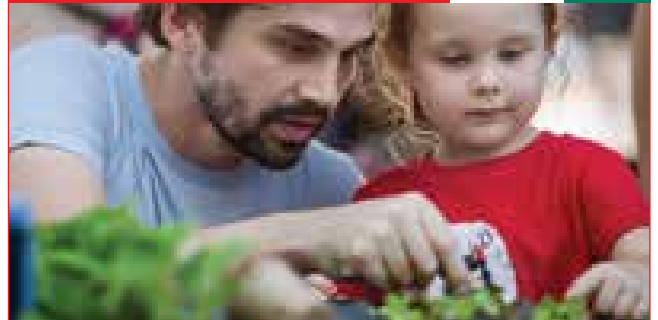
**6pm–7pm**

Meet three bold creatives with a greener vision for public art and design within the festival industry and beyond.

## City of Science

FAMILY

FREE



**Presented with BHP Foundation**

**10am–2pm | Brisbane's Cultural Precinct**

For the first time in 2020, the all new City of Science will open on Thursday and Friday! Stroll around Brisbane's Cultural Precinct where you'll discover loads of fun and hands-on activities covering topics such as geoscience, chemistry, technology and environmental science.

### Highlights

**Electronic waste in  
a Circular Economy  
10am–2pm**

**Rescue Crew  
10am–2pm**

For full program refer to the timetable on page 17 and online

## The Hatchery

FAMILY

FREE - TICKETED



World Science Festival Brisbane's annual turtle hatching is an important conservation initiative allowing intimate access to Australia's Loggerhead turtles. Visitors can get a rare glimpse of hatching turtles in their incubation chambers and the first moments of their lives as they meet a seawater environment in specially designed tanks.

**30 minute sessions, 9am–4pm |**

**Whale Mall, Queensland Museum**

**This event is free - ticketed, please book online.**

Queensland Museum is welcoming, accessible and inclusive. With advance notice, we can accommodate individual needs.

## Conversations and Events



### Hunting the Cosmic Dawn

7:30pm–9pm | Concert Hall, QPAC | \$35

**Moderator:** Jonathan Webb

**Participants:** Nichole Barry, Tamara Davis, Lisa Harvey-Smith

Living on a terrestrial planet and orbiting a star that is just one of the hundreds of billions in our galaxy can make one feel insignificant. But to an astrophysicist, it is fascinating. How did it all begin, how will it end and are we alone? It's like, totally cosmic.

**Presented with The University of Queensland**



### Has Science Communication Failed?

5:30pm–7pm | slq Auditorium 1, State Library of Queensland | \$35

**Moderator:** Tanya Ha

**Participants:** Linden Ashcroft, Bobby Cerini, Verity Morgan-Schmidt, Peter Van Onselen

Where did it all go wrong? For decades, scientists have become increasingly certain about the reality of our changing climate and the root cause. So why has the world been so slow to accept the idea. Is it ignorance, greed, or did the messengers just fail?



### Anthropology and Architecture

8am–8:45am | Cafe Muse, Queensland Museum | \$30 | Includes light breakfast

**Moderator:** Natasha Mitchell

**Participant:** Paul Memmott

The built environments of Aboriginal Australia were as diverse and rich in heritage as the communities who designed them. This rarely heard part of our own country's anthropological story will surprise, delight and enthral anyone with a bent for cultural architecture.



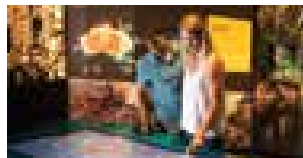
### Volcanology Unearthed

6pm–7pm | The Edge, State Library of Queensland | \$35

**Moderator:** Nate Byrne

**Participants:** Rebecca Carey, Heather Handley, Tamsin Mather

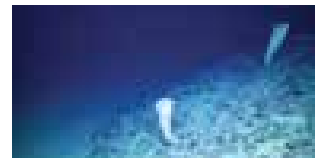
Volcanoes can be both awe-inspiring and devastatingly destructive, from lava flows and toxic plumes to wreaking havoc with the ocean's floor. Meet the scientists who study these forces of nature, find out how they go about doing it and share in some of their amazing discoveries.



### After Dark

5:30pm–9pm | Level 2, Foyer, Queensland Museum | \$25 | 18+ only event

When the sun goes down, the spiders come out at Queensland Museum. In this After Dark, enjoy access to *Spiders – The Exhibition* where you'll see 12 live species and 200 specimens up close. Plus, enjoy access to SparkLab as well as expert talks, live music, and baby turtles up close at The Hatchery. With food and drinks available for purchase, grab a friend and a drink for a great night out at the museum this festival!



### Into the Abyss: With Merrick Ekins

3:30pm–4:30pm | Level 2, Theatre, Queensland Museum | \$18

**Moderator:** Bernie Hobbs

**Participant:** Merrick Ekins

Come on a deep dive into the underwater abyss of Australia's least explored environment with Merrick Ekins, Queensland Museum's Collection Manager of Sessile Marine Invertebrates. Share in the excitement of discovering unknown species of carnivorous sponges and gain a rare glimpse into Queensland Museum's valuable marine invertebrate collection.

## Schools Program

### Q and A with Dr K: Schools Show Brisbane

10am–11am | Concert Hall, QPAC | \$10

Join science broadcaster Dr Karl Kruszelnicki and find out why it's safer for a cat to fall from a 32-storey building than a 7-storey building, and give you the low-down on the Bermuda Triangle, and how come wombats poo out about 90 little cubes (yes, cubes) each day!

**Presented with QPAC**

### Future Careers in Science with Dr Karl

1pm–2:30pm | Concert Hall, QPAC | \$10

Dr Karl discusses future careers in genetics, engineering, basic physics, computer science and the big one – your environment. Part science, part career guidance, part entertainment, and all fun. Bring your burning science questions for the Q&A!

**Presented with QPAC**

### The Hatchery

Multiple sessions | Whale Mall, Queensland Museum

Get a rare glimpse of Australia's precious Loggerhead turtles hatching in their incubation chambers and the first moments of their lives as they meet a seawater environment in specially designed tanks.

### Stem Cell Bioengineer's Apprentice

10:30am–11:30am | TRI | \$10

As an Apprentice work alongside Mike Doran to learn about bone marrow-derived mesenchymal stem/stromal cells (MSC) and their use in tissue repair. Stain differentiated stem cells, and learn how to use a 3D printer to make scaffolds for bone repair.

### Museum Curator's Apprentice

11:30am–1pm | Queensland Museum

Biologists showcase Queensland's remarkable marine biodiversity, as well as Queensland Museum's priceless collection and the scientific research undertaken at the museum.

## The Nucleus

FREE

### Birds, Brains and Bonding

8pm–9pm

Join us as we discuss love, through two seemingly disparate areas—the human brain and bird flirting. Hosted by Dr Matt Agnew.

### Moreton

9:30pm–10:30pm

A Brisbane based art-rock act with an undeniably stirring sound. Their brooding style has established them a strong cult following in the Australian music scene.

## City of Science

FAMILY

FREE



**Presented with BHP Foundation**

10am–2pm | Brisbane's Cultural Precinct

On Friday, City of Science will animate Brisbane's Cultural Precinct with interactive and engaging science! The fun will continue at night with extended hours (see map for more details) to entertain scientists of all ages. You'll also get a glimpse into our pre-historic past with Dead Puppet Society's Megafauna installation.

### Highlights

**Dr Joe,  
Travelling Scientist**  
10am–2pm

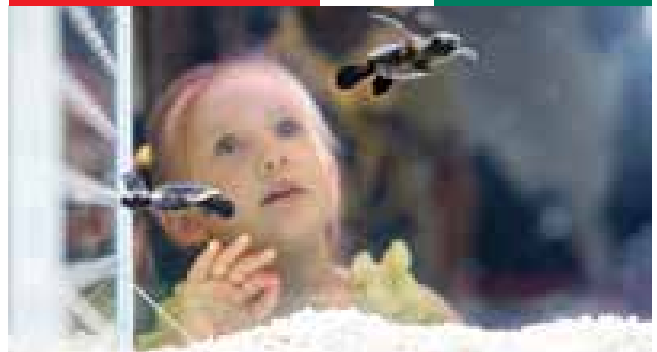
**Build a Balancing  
Sculpture**  
10am–2pm

For full program refer to the timetable on page 17 and online

## The Hatchery

FAMILY

FREE - TICKETED



World Science Festival Brisbane's annual turtle hatching is an important conservation initiative allowing intimate access to Australia's Loggerhead turtles. Visitors can get a rare glimpse of hatching turtles in their incubation chambers and the first moments of their lives as they meet a seawater environment in specially designed tanks.

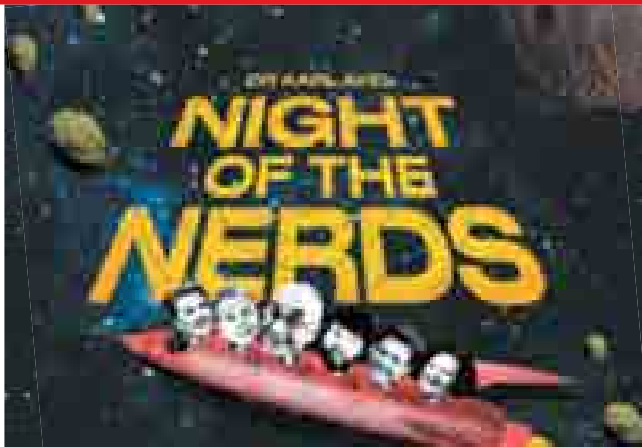
**30 minute sessions, 9am–4pm |**

**Whale Mall, Queensland Museum**

**This event is free - ticketed, please book online.**

Queensland Museum is welcoming, accessible and inclusive. With advance notice, we can accommodate individual needs.



**Conversations and events****Dr Karl and Night of the Nerds****7pm–8:30pm | Concert Hall, QPAC | \$60**

Hosted by comedian Mark Humphries, it's the festival's very own, very nerdy, variety show! Dr Karl kicks things off with his greatest moments in science. The house band, led by Clare Bowditch, will keep things rocking as our all-star cast of professional and amateur scientists take to the stage for the ultimate nerd showdown.

**Featuring:** Matt Agnew, Clare Bowditch, Marty Brown, Dana Gehrman, Mark Humphries, Karl Kruszelnicki, Lawrence Leung, Kellie Lloyd, Margaret Sheil, Seja Vogel

**The Meaning of Dreaming:  
Waking the Mysteries of Sleep****11:30am–1pm | Concert Hall, QPAC | \$35**

Dreams can be so absurd—so why do they feel so real? Humans have attempted to understand dreams for millennia, and now science is finding answers. We'll look to neuroscience and psychology to explain how the sleeping and waking selves can live in the same skull, and what each can tell us about the other.

**Featuring:** Matthew Wilson, Sherman Fairchild Professor of Neurobiology, Massachusetts Institute of Technology

**Presented with World Science Festival New York**

**Big Data and Me****1pm–2pm | Cremorne Theatre, QPAC | \$35****Moderator:** Ariel Bogle

**Participants:** Joanne Aitken, Kerrie Mengersen, Matt Shepit

In 2020, big data runs most of our lives. But why does that usually conjure dread? The good news is that data scientists are increasingly finding more positive ways to use and share data. Be brave, step onto the big data super highway, and find out what's in it for you.

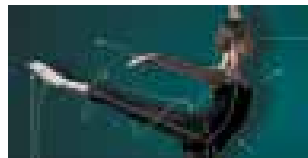
**Presented with QUT**

**Fears and Phobias:  
Causes, Curiosities  
and Cures****10am–11am | slq Auditorium 1,  
State Library of Queensland  
| \$35****Moderator:** Lynne Malcolm

**Participants:** Corrie Ackland, Robert Raven, Pankaj Sah

Spiders, heights, getting audited! It seems we are all afraid of something. Some of these fears evolved to keep us alive, while others morph into phobias which can border on irrational and crippling. How is fear programmed in the brain, and can it be overcome?

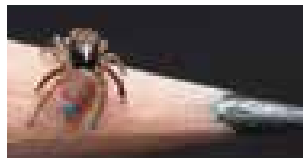
**Presented with The University of Queensland**

**Science on Pointe****10am–11am | Cremorne  
Theatre, QPAC | \$35****Moderator:** Bernie Hobbs

**Participants:** Li Cunxin, Tamara Davis, Zara Gomes, Rani Luther

Ballet synchronises balance, precision, poise and strength in an exquisitely effortless performance. Behind the beauty is a fascinating mixture of physics and physicality. Li Cunxin, Queensland Ballet Artistic Director, is joined by experts in movement and moving to tease out the science in the magic that is ballet.

**Presented with Queensland Ballet**

**Fangs and Fascination:  
Queensland Museum  
Arachnology****1:30pm–2:30pm | Level 2,  
Theatre, Queensland  
Museum | \$18**

**Moderator:** Andrew Rozefelds

**Participants:** Barbara Baehr, Michael Rix, Owen Seeman

Spider fan or phobic, be captivated as our panel of Queensland Museum arachnologists unravel the world of arachnids, who are often feared and largely misunderstood. Hear the panel share stories of personal experiences and fascinating research.

**Climate Solutions:  
Interventions and  
Adaptations****1:30pm–2:30pm | slq  
Auditorium 1, State Library  
of Queensland | \$35****Moderator:** Natasha Mitchell

**Participants:** Hugh Hunt, Brendan Mackey

As scientific predictions from just 1 degree of global warming become catastrophic reality on the nightly news, how can governments, business and communities act more quickly to reach international targets. Join our experts to hear what climate action solutions are on the table and how they can be achieved.

**Presented with Griffith University**



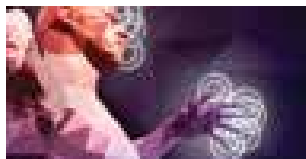
### Wild, Weird Weather

8:30am–9:15am | Cafe Muse,  
 Queensland Museum | \$30 |  
 Includes light breakfast

**Moderator:** Nate Byrne

**Participants:** Linden  
 Ashcroft, Justin Noonan

Mostly (and thankfully)  
 the daily weather is fairly  
 predictable, mundane even.  
 It'll be fine, cloudy, raining or  
 maybe a mixture. But every  
 now and then, things get  
 weird—tornadoes, super cells  
 and diamond dust. Find out  
 what drives the extremes,  
 and can it really rain fish?



### The Senses: Perception vs Reality

4pm–5:30pm | Cremorne  
 Theatre, QPAC | \$35

**Moderator:** David Whiteman

**Participants:** Alex Hewitt,  
 David Ryugo, Heather Smyth,  
 Tasha Stanton

Forget the sixth sense! It now  
 seems that humans have way  
 more than that. Our senses  
 keep us alive and build our  
 individual picture of the  
 world. But perception is not  
 always reality and senses can  
 falter. Discover how senses  
 work, what can go wrong and  
 how science is progressing to  
 fix the problems.

### A Night at the Museum

5:30pm–8:30pm | Queensland Museum |  
 Adult \$21 | Child \$15

When the sun goes down the spiders come out at  
 Queensland Museum. Join us for live music, hands-on  
 activities, face painting, balloon twisting, live animals and  
 baby turtles.

**FAMILY**

## Science Unplugged

10:30am–12pm and 2pm–  
 3:30pm | slq Auditorium 2,  
 State Library of Queensland  
 | \$18

Each Unplugged gives you a  
 chance to get up close with  
 three scientists, hand-picked  
 from the festival line-up.  
 Find out what gets them  
 into the lab, what they do  
 there and why they love it.  
 It's a relaxed format, more  
 of a campfire chat than a  
 lecture, with plenty of time  
 for questions at the end.  
 Visit online for more details.

## Ockham's Razor

4:45pm–6:45pm | Concert  
 Hall Foyer, QPAC | Free

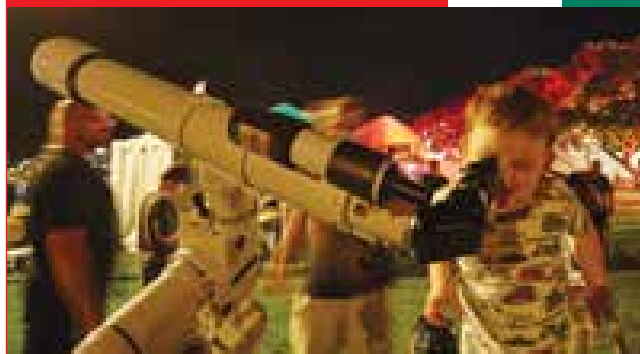
After sell-out events in  
 2018 and 2019, ABC Science  
 is back in Brisbane for a  
 special podcast recording  
 event. Ockham's Razor is the  
 ABC's soapbox for all things  
 scientific: stories, insights,  
 arguments or tributes—  
 anything that can grip an  
 audience by the ears for  
 10 straight minutes.

**Presented with ABC**

## City of Science

**FAMILY**

**FREE**



**Presented with BHP Foundation**

**9am–5pm | Brisbane's Cultural Precinct**

From Queensland Museum to GOMA, City of Science  
 is again taking over Saturday. Get hands-on with over  
 50 activity providers, and see free and engaging shows  
 at the Osmosis Stage. The fun continues into the  
 evening with an unmissable Stargazing event and  
 a spectacular 250-voice choir led by the amazing  
 Emma Dean from Cheep Trill.

### Highlights

**Formidable Vegetable**  
 6:15pm–7:15pm

**Earth Hour Concert**  
 8:30pm–9:30pm

### Osmosis Stage

#### Trinket The Robot

Presented with  
 Little Wing Puppets  
**9am–9:45am**

#### UQ Science Demo Troupe

Presented with The  
 University of Queensland  
**10am–10:30am**

#### Under the Stars

Presented with  
 Lisa Harvey-Smith  
**10:45am–11:15am**

#### Ballet Moves

Presented with  
 Queensland Ballet  
**12:15pm–12:45pm**

For full program refer to the timetable on page 17 and online

## The Hatchery

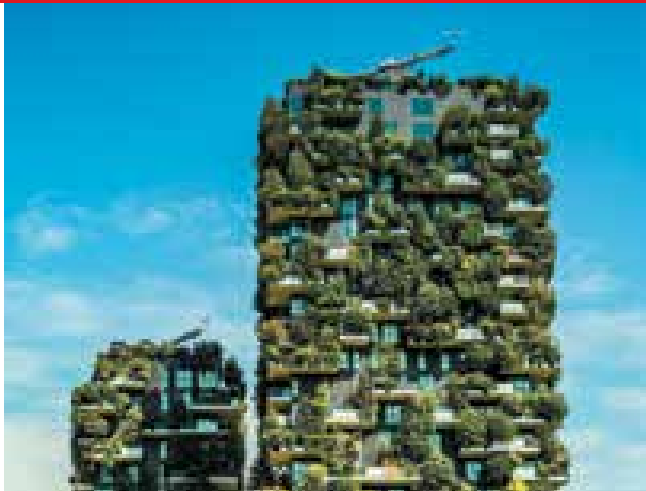
**FAMILY**

**FREE - TICKETED**

World Science Festival Brisbane's annual  
 turtle hatching is an important conservation  
 initiative allowing intimate access to  
 Australia's Loggerhead turtles. Visitors can  
 get a rare glimpse of hatching turtles in their  
 incubation chambers and the first moments of  
 their lives as they meet a seawater environment  
 in specially designed tanks.

**30 minute sessions, 9am–4pm |**  
**Whale Mall, Queensland Museum**

**This event is free - ticketed, please book online.**

**Conversations and Events****Cities 2060: Thriving not Just Surviving**

11:30am–1pm | Concert Hall, QPAC | \$35

**Moderator:** Niraj Lal**Participants:** Joerg Baumeister, Tony Matthews

Cities have changed remarkably in the last few decades, and the next few will be no different as populations swell and climate change bites. Granted, we are unlikely to “meet the Jetsons”, but what will the city of the future look like and how will life differ as environments change and technology evolves?

**Presented with Griffith University****Where has all the Water Gone?**

1:30pm–2:30pm | slq Auditorium 1, State Library of Queensland | \$35

**Moderator:** Stuart Bunn**Participants:** Paul Bertsch, Kate Lanskey, Michael Young

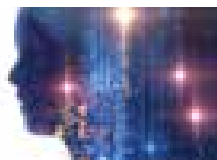
We live on the “blue planet”. Water covers 71% of the Earth’s surface and all life depends on it. So what happens when it runs out? The challenges posed by droughts, changing climates and increasing populations cannot be ignored, but can we science our way out of this one?

**HOWZAT! The Science in Cricket**

10am–11am | Cremorne Theatre, QPAC | \$35

**Moderator:** Joel Gilmore**Participant:** Michael Kasprovicz

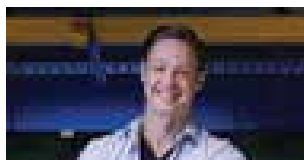
In the right hands a cricket ball can be made to do some amazing things, appearing to defy the laws of physics. Former test cricketer, Michael Kasprovicz, joins cricket-loving scientists to unravel some of the formulae and forces behind this game. Dissect the science and technology of a winning innings!

**AI: Promise, Perils and Prejudice**

1pm–2pm | Cremorne Theatre, QPAC | \$35

**Moderator:** Paul Barclay**Participants:** Michael Milford, Catriona Wallace

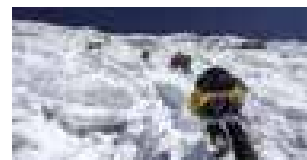
Artificial Intelligence is already part of our daily lives, helping us avoid traffic jams, email spam and bad dates. It has the potential to supercharge everything from medicine to space travel. But with machine intelligence approaching that of humans, can we avoid embedding our foibles and biases?

**Dr Matt Agnew’s Guide to Life Beyond Earth**

3:30pm–4:30pm | Cremorne Theatre, QPAC | \$35

**Participant:** Matt Agnew

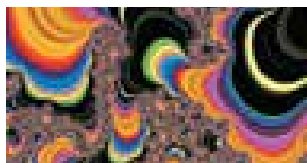
Astrophysicist, Dr Matt Agnew, explores if we are alone in the universe. Dr Matt will answer your burning astronomical questions: where should we look for life, how do you find worlds beyond earth’s solar system, and what are the chances of actually finding life out there?

**Pushing the Limits: Human Extremes**

10am–11am | slq Auditorium 1, State Library of Queensland | \$35

**Moderator:** Carl Smith**Participants:** Eric Brymer, Joshua Groth

Extreme sports and adventure are synonymous with people who crave risk and chase adrenaline, but this popular image doesn’t fit with the reality according to science. So why do they do it and what does it take, physically and mentally? Is it uniquely human, or are we bound by biology?



### **A Psychedelic Renaissance**

**3pm–4:30pm | Concert Hall, QPAC | \$35**

**Moderator:** Natasha Mitchell

**Participants:** Olivia Carter, Matthew W. Johnson, Paul Likhaitzky, Margaret Ross

Psychedelics rose to worldwide prominence as mind-altering drugs in the tumultuous and risk-taking 1960s, before being widely banned as too dangerous. Now, it seems their unique effects on the brain could have an important place in modern medicine. Turn up, tune in and find out.



### **Trapdoor Spiders: With Michael Rix**

**1:30pm–2:30pm | Level 2, Theatre, Queensland Museum | \$18**

**Moderator:** Bernie Hobbs  
**Participants:** Michael Rix

Immerse yourself in the wonderful world of trapdoor spiders and their kin. Join renowned arachnologist, Michael Rix, as he highlights cutting-edge research conducted at Queensland Museum, and provides a rare insight into the diverse characteristics and life cycles of these amazing creatures behind the door.

### **Queensland Women in STEM Prize**

**10am–11:30am | Level 2, Theatre, Queensland Museum**

**Participant:** Lisa Harvey-Smith

The Queensland Women in STEM Prize recognises the valuable contribution of Queensland women working in Science, Technology, Engineering and Mathematics. Join astrophysicist and Australia's first Women in STEM Ambassador, Lisa Harvey-Smith as we announce the 2020 Queensland Women in STEM Prize winners and celebrate their amazing research.



### **Science Unplugged**

**10:30am–12pm and 2pm–3:30pm | slq Auditorium 2, State Library of Queensland | \$18**

Each Unplugged gives you a chance to get up close with three scientists, hand-picked from the festival line-up. Find out what gets them into the lab, what they do there and why they love it. It's a relaxed format, more of a campfire chat than a lecture, with plenty of time for questions at the end. Visit online for more details.

## **City of Science**

**FAMILY**

**FREE**



**Presented with BHP Foundation**

**9am–4pm | Brisbane's Cultural Precinct**

On Sunday, the fun continues. Find out more about bowerbirds and their interest in the colour blue through the magic of puppetry, become an expert beatboxer with Mal Webb or get your goggles on and see some amazing science. Lastly, don't miss the chance to discover The Ants from Polyglot Theatre!

### **Highlights**

**The Ants**  
**10am–10:30am**

**Bandmouth, Beatbox and Beyond**  
**12:15pm–1:15pm**

### **Osmosis Stage**

**Bringing STEM to Life**  
 Presented with Wonder of Science Young Science Ambassadors and QUT  
**10am–10:30am**

**Deadly Science**  
 Presented with Corey Tutt  
**10:45am–11:15am**

**A Little bit of Blue**  
 Presented with Little Wing Puppets  
**9am–9:45am**

**Science on the Go!**  
 Presented with Griffith University  
**3:15pm–3:45pm**

For full program refer to the timetable on page 17 and online

## **The Hatchery**

**FAMILY**

**FREE - TICKETED**

World Science Festival Brisbane's annual turtle hatching is an important conservation initiative allowing intimate access to Australia's Loggerhead turtles. Visitors can get a rare glimpse of hatching turtles in their incubation chambers and the first moments of their lives as they meet a seawater environment in specially designed tanks.

**30 minute sessions, 9am–4pm | Whale Mall, Queensland Museum**  
**This event is free - ticketed, please book online.**





## 16 | Environmental Program



**At World Science Festival Brisbane, we are committed to continuous improvement. We have big goals for the future – and we’re taking steps each year to make sure we reach our target. Here’s what we’re doing in 2020 to start our journey towards a more sustainable future. We hope you can join in, and if we all do a little bit more each year, the future will be bright!**

🌱 We’ve put together a comprehensive three-year plan to improve our environmental sustainability that considers local, State and Federal best practice guidelines as well as the UN Sustainable Development Goals.

- 🌱 We’re measuring both our partners’ and our impact as much as we can this year in order to start mitigation in the future.
- 🌱 We’re taking steps towards eliminating single use plastics from our festival.
- 🌱 We’re reducing the number of printed programs substantially and encouraging our visitors to view the program online. Plus, we’re maximising the website to make it easy to use on mobile devices.
- 🌱 We’re choosing 100% recycled paper for our printed materials.
- 🌱 We are re-using corflute signage from last year wherever we can and redesigning any new signage to incorporate reused and recycled materials.
- 🌱 We are designing the program and venues to account for the hot weather, adding shade and misting sprays around the City of Science. We’re saying no to temporary air-conditioning in outdoor venues and we’re holding our breakfast sessions indoors to avoid the heat.
- 🌱 We’re powering some of our City of Science activations using solar power.
- 🌱 We’re demonstrating 9 of the UN’s sustainability goals and using them as wayfinders around the site—educate and navigate!
- 🌱 We’ve asked food vendors to use biodegradable packaging and we are positioning recycling and compostable waste bins around the site.

## Hatchery Crusaders



**Presented with BHP Foundation**

**Celebrating World Science Festival Brisbane’s most popular activity, The Hatchery, this education program reinforces Queensland Museum’s commitment to support and foster STEM-literacy.**

In the lead up to the festival, and in conjunction with the festival team, schools were invited to produce a piece of artwork using recycled plastic materials to reflect their learnings about plastic pollution and the impact on our precious marine life.

This exciting project invites students to learn more about Loggerhead turtles and the impact of ocean pollution threatening the future of these marine favourites.

Guided by Queensland Museum’s turtle expert Patrick Couper, students learn about the impact of plastic pollution on turtles and other marine creatures.

The winning school will have a special opportunity to name one of our turtle hatchlings, as well as first priority entrance to The Hatchery during World Science Festival Brisbane in March 2020.

The finalist artworks will be showcased during World Science Festival Brisbane in March 2020 at Queensland Museum to raise public awareness about the plight of marine turtles.



Wednesday, 25 March	8am	9am	10am	11am	12pm	1pm	2pm	3pm	4pm	5pm	6pm	7pm	8pm	9pm	10pm	11pm
Concert Hall QPAC												Einstein and the Quantum...				
Whale Mall Queensland Museum		The Hatchery 9am, 9:30am, 10am, 10:30am					The Hatchery 2:30pm, 3pm, 3:30pm, 4pm									
The Nucleus Queensland Museum									Nonsense				Notey and Noisy			
Thursday, 26 March	8am	9am	10am	11am	12pm	1pm	2pm	3pm	4pm	5pm	6pm	7pm	8pm	9pm	10pm	11pm
Cafe Muse Queensland Museum	Start Your...															
Concert Hall QPAC												Running the Planet Without Costing...				
slq Auditorium 1 State Library of Queensland									Beyond the Emu							
Level 2, Theatre Queensland Museum								Queensland's Extreme...								
Whale Mall Queensland Museum		The Hatchery 9am, 9:30am, 10am, 10:30am					The Hatchery 2:30pm, 3pm, 3:30pm, 4pm									
The Nucleus Queensland Museum									Hayley Marsten		Festival Footprints...	Unlikely Alliances		Twin Sister		
Cinema A GOMA											American Psycho (2000)			System Crashers (2019)		
City of Science Brisbane's Cultural Precinct				10am-2pm												
Friday, 27 March	8am	9am	10am	11am	12pm	1pm	2pm	3pm	4pm	5pm	6pm	7pm	8pm	9pm	10pm	11pm
Cafe Muse Queensland Museum	Anthro- pology...															
Concert Hall QPAC			O and A with Dr K...			Future Careers in Science with Dr Karl							Hunting the Cosmic Dawn			
slq Auditorium 1 State Library of Queensland											Has Science Communication...					
The Edge State Library of Queensland											Volcanology Unearthed					
Level 2, Foyer Queensland Museum												After Dark				
Level 2, Theatre Queensland Museum									Into the Abyss							
Whale Mall Queensland Museum																
The Nucleus Queensland Museum										Megan Cooper		Voices of Colour: Future Ancestors	Birds, Brains and Bonding		Moreton	
Cinema A GOMA											Dosed (2019)		Fear and Loathing in Las Vegas (1998)			
City of Science Brisbane's Cultural Precinct				10am-2pm							2pm-8pm extended hours - see map					



**Gallery of Modern Art  
(GOMA)**

**State Library of Queensland  
(SLQ)**

**45  
Osmosis  
Stage**

**The  
Edge**

**Stanley  
Place**

**Grey Street**

## Art Trail

This year City of Science and Brisbane's Cultural Precinct will see a collection of inspiring and thought provoking art installations and activations.

## Sustainability Pods

We are committed to continuous improvement and have big goals for the future. As part of our journey towards a more sustainable future, we have installed sustainability pods throughout the City of Science.

**For more detailed information  
check out our City of Science  
fold out map onsite.**

**1 Activity Providers**  
Refer to page 21 of the Program

**i Information**

**+ First Aid**

**🛒 Queensland Museum Shop**

**F Food Vendors**

**L Lifts**

**T Toilets**

**Extended hours Friday  
and Saturday night**

**Thursday to Sunday**

**Saturday and Sunday**

# City of Science

## Brisbane's Cultural Precinct

Presented with BHP Foundation

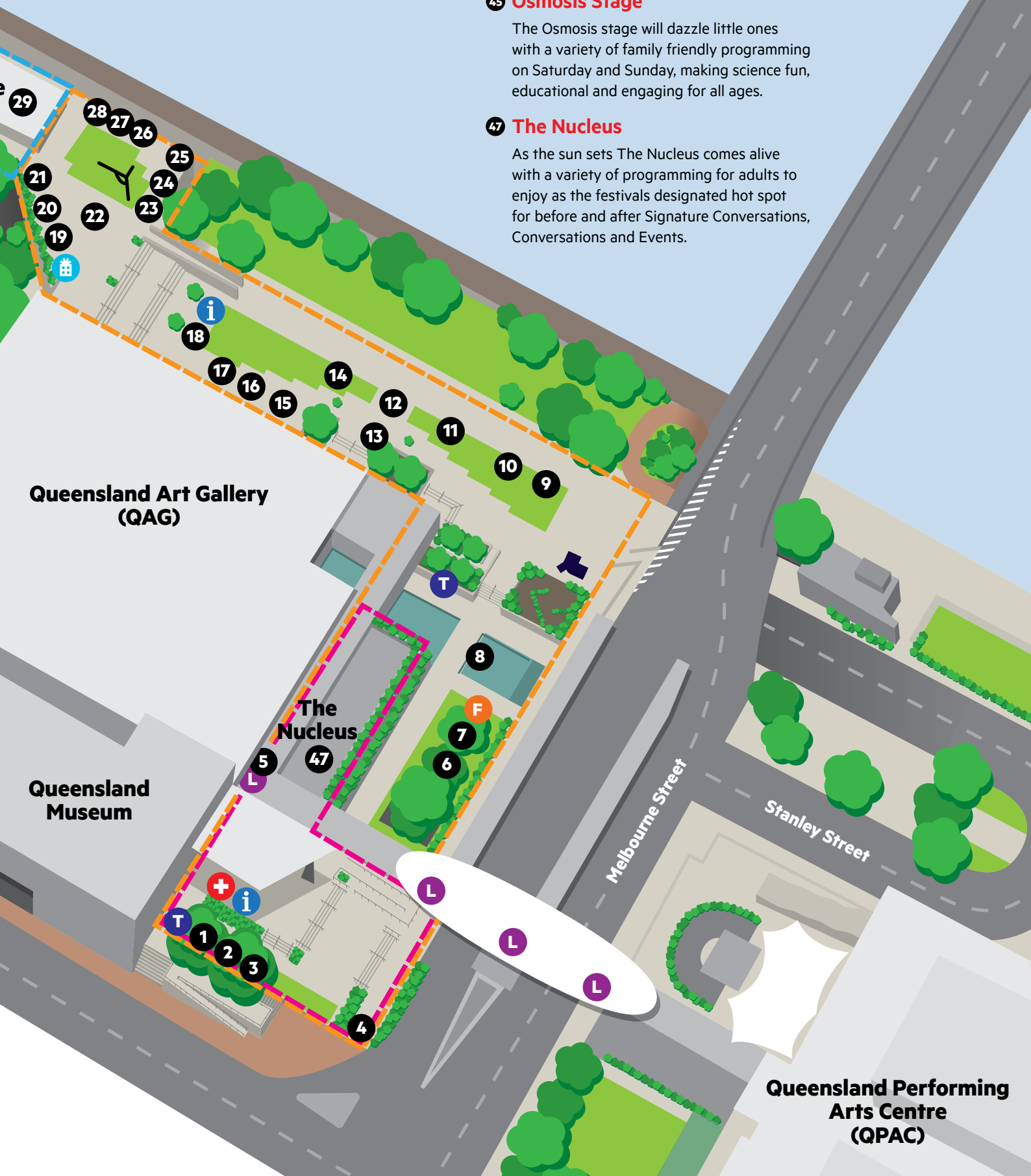
Explore the all new City of Science and see Brisbane's Cultural Precinct come alive with science and art. With programming from Thursday to Sunday be sure to come and explore a variety of activities.

### 45 Osmosis Stage

The Osmosis stage will dazzle little ones with a variety of family friendly programming on Saturday and Sunday, making science fun, educational and engaging for all ages.

### 47 The Nucleus

As the sun sets The Nucleus comes alive with a variety of programming for adults to enjoy as the festivals designated hot spot for before and after Signature Conversations, Conversations and Events.



Queensland Art Gallery (QAG)

Queensland Museum

The Nucleus

Stanley Street

Melbourne Street

Queensland Performing Arts Centre (QPAC)



Taking over Brisbane's Cultural Precinct, City of Science, winds all the way from Queensland Museum, along the Brisbane River and up to the Maiwar Green at GOMA. For four days enjoy FREE activities and demonstrations. Check out what's happening, who will be there, and plan your visit with our City of Science map on page 18 and 19.

- |   |   |  |
|---|---|--|
| <b>1 3D Reef Explorer</b><br>Presented with STEM Punks  | <b>18 DuckieBots Driving School</b><br>Presented with Micromelon Robotics                     | <b>36 SOS – Save Our Soils</b><br>Presented with Soil Science Australia                                  |
| <b>2 Defeating Cancer: A Virtual Reality Experience</b><br>Presented with Excite Science  | <b>19 How Healthy Is Your Waterway? Ask a Water Bug!</b><br>Presented with SAS Laboratory     | <b>37 What Bird Is That?</b><br>Presented with Birds Queensland  |
| <b>3 Ocean Polymer Puzzle Dome</b><br>Presented with STREET SCIENCE   | <b>20 Explore the World of Robotics and Engineering</b><br>Presented with Robotics Playground | <b>38 Interactive Robot Displays</b><br>Presented with Robogals Brisbane                                 |
| <b>4 Electronic Waste in a Circular Economy</b><br>Presented with Substation 33   | <b>21 Hands-On Science</b><br>Presented with The Young Scientists Australia                   | <b>39 Lifeblood. Heartbeat of the Nation</b><br>Presented with Australian Red Cross Lifeblood            |
| <b>5 Rescue Crew</b><br>Presented with Sue Loveday  | <b>22 QM Inside Out</b><br>Presented with Queensland Museum Network                           | <b>40 The Treasures of Taiwan</b><br>Presented with National Museum of Natural Science Taiwan            |
| <b>6 Listen and Learn Together – Play for Under 5's</b><br>Presented with C&K   | <b>23 Understanding Earth Science</b><br>Presented with Geological Society of Australia       | <b>41 Butterflies, Bees and Other Insects</b><br>Presented with The Butterfly & Other Invertebrates Club |
| <b>7 Library</b>  | <b>24 Learn to Code</b><br>Presented with Junior Engineers                                    | <b>42 All Aboard!</b><br>Presented with Queensland Maritime Museum                                       |
| <b>8 The Water Zone</b><br>Presented with SEQWater  | <b>25 The Marvellous World of the Body</b><br>Presented with Australian Catholic University   | <b>43 Cross River Rail Information Station</b><br>Presented with Cross River Rail Delivery Authority     |
| <b>9 BHP Foundation Innovation Station</b><br>Presented with BHP Foundation   | <b>26 Sustainable Gardens</b><br>Presented with Urban Utilities                               | <b>44 It's Rocket Science!</b><br>Presented with It's Rocket Science Adventures                          |
| <b>10 Question. Explore. Research</b><br>Presented with QUT   | <b>27 Dr Joe, the Travelling Scientist</b><br>Presented with Creating Science                 | <b>45 Osmosis Stage</b>  |
| <b>11 Citizen Science – Everyday People, Powering Science</b><br>Presented with the Department of Environment and Science in association with Australian Citizen Science Association - Queensland Chapter | <b>28 Maker Studio</b><br>Presented with Petrosains Kuala Lumpur                              | <b>46 Stargazing</b><br>Presented with Brisbane Astronomical Society and Celestron                       |
| <b>12 Build a Balancing Sculpture</b><br>Presented with Big Bang Education  | <b>29 The Edge</b>  | <b>47 The Nucleus</b>  |
| <b>13 Reef Builders</b><br>Presented with Great Barrier Reef Foundation   | <b>30 Workshop Space</b>  |  |
| <b>14 Australia's Epic Story</b><br>Presented with ARC Centre of Excellence for Australian Biodiversity and Heritage (CABAH)  | <b>31 Nine News Queensland's Mini News Desk</b><br>Presented with Channel 9                   |  |
| <b>15 Experience Science with UQ</b><br>Presented with The University of Queensland   | <b>32 The Future of Health</b><br>Presented with QIMR Berghofer Medical Research Institute    |  |
| <b>16 Australian Science Olympiads</b><br>Presented with Australian Science Innovation  | <b>33 Movement, Mechanics and Momentum</b><br>Presented with Young Engineers Brisbane / North |  |
| <b>17 STEM at Griffith</b><br>Presented with Griffith University  | <b>34 Reducing Waste</b><br>Presented with Brisbane City Council                              |  |
|   | <b>35 Maker Space Challenges</b><br>Presented with Steam Powered Kids                         |  |



## 22 | Featured Participants



### **Corrie Ackland**

Clinical Director, Clinical Psychologist  
**Sydney Phobia Clinic**

Corrie is the Clinical Director, co-founder and principal Clinical Psychologist of the Sydney Phobia Clinic (SPC) and International Phobia Association (IPA). She holds Bachelor and Masters degrees in psychology and is a registered training supervisor. At Sydney Phobia Clinic, Corrie sees clients with specific phobia presentations and is involved in developing Virtual Reality solutions for the health and performance fields.



### **Joanne Aitken**

General Manager, Research  
**Cancer Council Queensland**

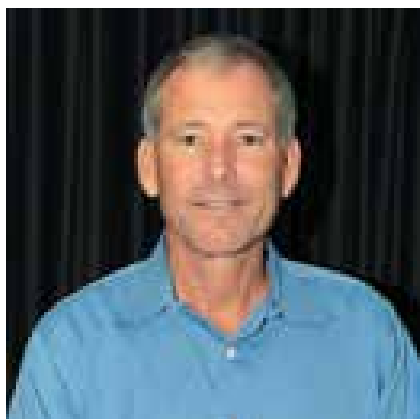
Joanne Aitken is internationally recognised as an epidemiologist working in childhood cancer. She has over 250 scientific publications including in *Nature*, *Nature Genetics* and *The Lancet*. She is Head of the Viertel Cancer Research Centre at Cancer Council Queensland, Director of the Australian Childhood Cancer Registry, a member of Cancer Australia's Advisory Council, and President of the International Association of Cancer Registries.



### **Linden Ashcroft**

Lecturer in Science Communication and Climate Science, School of Earth Sciences  
**The University of Melbourne**

Linden Ashcroft is a climate scientist and science communicator who teaches at The University of Melbourne. Her research explores the past climate of Australia using historical documents and weather observations to help us prepare for the future. Linden also communicates science regularly on community radio and her writing was selected for the 2019 Best Australian Science Writing Anthology.



### **Paul Bertsch**

Queensland Chief Scientist  
**Department of Environment and Science**

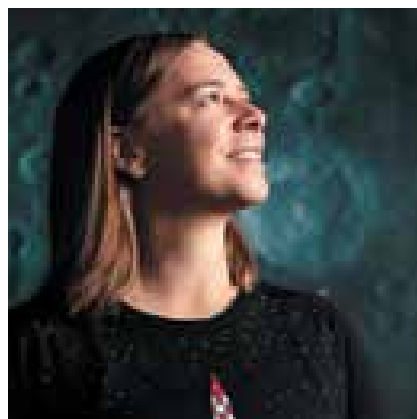
Paul Bertsch is Queensland's interim Chief Scientist and Deputy Director, Science of the Land and Water Business Unit at CSIRO, with 30 years' experience in soil science, environmental geochemistry and toxicology. His passion is championing multi-disciplinary and cross-agency science approaches to the significant challenges facing Australia and the world, specifically around the environment, natural resource management and sustainability.



### **Taylah Griffin**

Graduate Systems Engineer  
**Boeing Defence Australia Ltd**

In 2018 Taylah Griffin became the first Indigenous person to graduate with an Honours degree in Electrical and Aerospace Engineering, and the first Indigenous female to graduate from any Engineering degree from QUT in Brisbane. Taylah was the recipient of the 2018 CSIRO Indigenous STEM Tertiary Achievement Award, and currently works as a Test Engineer on the Wedgetail platform at Boeing Defence Australia.



### **Lisa Harvey-Smith**

Australian Government Women in STEM Ambassador  
**University of New South Wales**

Lisa Harvey-Smith is an astrophysicist, author and the inaugural Australian Government's Women in STEM Ambassador. She is responsible for increasing the participation of women and girls in STEM across the nation. She is an award-winning astronomer with research interests in the birth and death of stars and supermassive black holes and serves on the Australian Space Agency's Advisory Group.



**Hugh Hunt**

Reader in Engineering Dynamics and Vibration

**Cambridge University**

Hugh Hunt's research focuses on noise and vibration from underground railways, but along the way he also became a reluctant expert on geoengineering as Co-Investigator on a project looking at solar radiation management. He now promotes other technologies for the removal of atmospheric greenhouse gases and runs the Cambridge Climate Lecture Series, designed to raise awareness of the urgency around climate change.



**Matthew W. Johnson**

Professor, Psychiatry and Behavioral Sciences

**Johns Hopkins University School of Medicine**

Matthew W. Johnson, PhD, is a Professor and expert on psychedelics, other drugs, and addiction. He has conducted research in behavioural pharmacology including psychedelics for >20 years. In 2008, Matt published psychedelic risk and safety guidelines that helped to resurrect human research in the area, as well as the first research on psychedelic treatment of tobacco addiction in 2014.



**Tamsin Mather**

Professor of Earth Sciences  
**University of Oxford**

Tamsin Mather is a volcanologist and professor of earth sciences at the University of Oxford in the UK. In addition to a PhD on the atmospheric effects of volcanism, she holds Masters in Chemistry and History and in Philosophy of Science from the University of Cambridge. In 2018, Tamsin won the prestigious Royal Society Rosalind Franklin Award.



**Michelle Taylor**

Manager Intelligent Grid New Technology

**Energy Queensland**

Michelle is an electrical engineer working in new energy technologies including solar photovoltaics, batteries and smart devices. She is part of Energy Queensland's power-network businesses, developing future opportunities and customer value through emerging, new and disruptive technologies. Safety and innovation drive her broader professional involvement in bodies including the Electrical Safety Office, Australian Standards and university engineering schools.



**Catriona Wallace**

Founder and Executive Director  
**Flamingo Ai**

Catriona Wallace is the Founder and Executive Director of Artificial Intelligence company Flamingo Ai, the second only woman-led business to list on the Australian Stock Exchange, and was recognised as an eminent scientist by the Royal Institution of Australia. An Adjunct Professor at the Australian Graduate School of Management, UNSW, Catriona is also a philanthropist, human rights activist and mother of five.



**Matthew Wilson**

Sherman Fairchild Professor of Neurobiology

**Massachusetts Institute of Technology (MIT)**

Matthew Wilson has a Bachelor and Masters degree in electrical engineering and a PhD in Computation and Neural Systems from the California Institute of Technology. He joined MIT in the Department of Brain and Cognitive Sciences in 1994 where he studies the role of sleep in learning and memory, and brain systems that contribute to spatial navigation and decision-making.

**Corrie Ackland**

Clinical Director, Clinical Psychologist  
**Sydney Phobia Clinic**

**Matt Agnew**

Astrophysicist and Science Communicator

**Joanne Aitken**

General Manager, Research  
**Cancer Council Queensland**

**Jeff Aniba-Waia**

Saibaian Elder, Knowledge Custodian  
and Storyteller

**Linden Ashcroft**

Lecturer in Science Communication and  
Climate Science, School of Earth Sciences  
**The University of Melbourne**

**Barbara Baehr**

ABRS Research Fellow, Natural  
Environment – Arachnids  
**Queensland Museum**

**Amea Baird**

Clinical Neuropsychologist  
**Newcastle Neuropsychology**

**Nichole Barry**

Postdoctoral Researcher  
**The University of Melbourne**

**Joerg Baumeister**

Professor, School of Engineering and Built  
Environment – Architecture and Design  
**Griffith University**

**Tanja Beer**

Senior Lecturer Interior and Spatial Design  
**Griffith University**

**Susan Bengtson Nash**

Associate Professor and Director Southern  
Ocean Persistent Organic Pollutants Program  
**Griffith University**

**Paul Bertsch**

Queensland Chief Scientist  
**Department of Environment and Science**

**Ariel Bogle**

Technology Reporter  
**ABC**

**Fanny Boulaire**

Senior Research Fellow, Science and  
Engineering Faculty  
**QUT**

**Eric Brymer**

Associate Professor  
**Australian College of Applied Psychology**

**Stuart Bunn**

Director, Australian Rivers Institute  
**Griffith University**

**David Burton**

Writer and Researcher

**Nate Byrne**

Presenter  
**ABC News Breakfast**

**Rebecca Carey**

Senior Lecturer in Earth Sciences, School of  
Natural Sciences  
**University of Tasmania**

**Olivia Carter**

Associate Professor, Psychology  
**The University of Melbourne**

**Bobby Cerini**

Director of Science and Learning  
**Questacon**

**Alexander Colsmann**

Head of Organic Photovoltaics Group  
**KIT Energy Center**

**Lee Constable**

Presenter  
**Scope**

**Gary Cranitch**

Photographer, Public Engagement –  
Publications  
**Queensland Museum**

**Li Cunxin**

Artistic Director  
**Queensland Ballet**

**Tamara Davis**

Professor, School of Mathematics  
and Physics  
**The University of Queensland**

**Merrick Ekins**

Collection Manager, Natural Environments –  
Sessile Marine Invertebrates  
**Queensland Museum**

**Joel Gilmore**

Science Communicator

**Zara Gomes**

Head of Performance Medicine  
**Queensland Ballet**

**Brian Greene**

Chairman, World Science Foundation  
**Co-Founder, World Science Festival**

**Taylah Griffin**

Graduate Systems Engineer  
**Boeing Defence Australia Ltd**

**Joshua Groth**

Para-Alpinist / Extreme Adventurer  
**Sky Dance Adventure**

**Tanya Ha**

Science and Environment Communicator

**Heather Handley**

Associate Professor of Volcanology  
and Geochemistry  
**Macquarie University**

**Margaret Harvey**

Storyteller – Theatremaker, Filmmaker  
and Co-Director  
**Jo Ze SpArks**

**Lisa Harvey-Smith**

Australian Government Women in STEM  
Ambassador  
**University of New South Wales**

**Alex Hewitt**

Professor in Ophthalmology, Menzies  
Institute for Medical Research  
**University of Tasmania**

**Bernie Hobbs**

Presenter  
**ABC Science**

**Marcus Hughes**

Head of Indigenous Engagement and  
Strategy  
**Museum of Applied Arts and Sciences**

**Mark Humphries**

Satirist and Presenter

**Hugh Hunt**

Reader in Engineering Dynamics and  
Vibration  
**Cambridge University**

**Anjali Jaiprakash**

Advance Queensland Fellow Science and  
Engineering Faculty  
**QUT**

**Heather Janetzki**

Mammal/Bird Research Collection Manager  
**Queensland Museum**

**Matthew Johnson**

Associate Professor, Psychiatry  
and Behavioral Sciences  
**Johns Hopkins University School of  
Medicine**

**Gisela Kaplan**

Emeritus Professor – School of Science and  
Technology  
**University of New England**

## Michael Kasprowicz

Former Test Cricketer and Chairman  
**Sportcor**

## Espen Knutsen

Senior Curator Palaeontology  
**Queensland Museum**

## Karl Kruszelnicki

Science Broadcaster and Author  
**University of Sydney**

## Niraj Lal

Visiting Fellow, ANU Centre for Sustainable  
Energy Systems  
**Australian National University**

## Kate Lanskey

Principal Engineer, Water Planning  
**Engeny Water Management**

## Lawrence Leung

Comedian, TV Writer, Science Communicator

## Paul Liknaitzky

Research Fellow, School of Psychology  
**Deakin University**

## Rani Luther

Ballet Mistress and Creative Associate  
**Queensland Ballet**

## Brendan Mackey

Professor and Director, Griffith Climate  
Change Response Program  
**Griffith University**

## Lynne Malcolm

Broadcaster and host of 'All in the Mind'  
**ABC RN**

## Tamsin Mather

Professor of Earth Sciences  
**University of Oxford**

## Tony Matthews

Senior Lecturer Environmental Planning  
and Management  
**Griffith University**

## Phoebe Meagher

Wildlife Conservation Officer  
**Taronga Zoo**

## Paul Memmott

Aboriginal Environments Research Centre  
**The University of Queensland**

## Kerrie Mengersen

Distinguished Professor of Statistics  
**QUT**

## Michael Milford

Professor in Electrical Engineering  
**QUT**

## Verity Morgan-Schmidt

Stakeholder Relations Director  
**Farmers for Climate Action**

## Samantha Nixon

PhD Student, Institute for Molecular  
Bioscience  
**The University of Queensland**

## Justin Noonan

Storm Chaser/Forecaster

## Susan O'Connor

Chief Investigator & People Theme Leader  
**Australian National University**

## Mark Paterson

Chief Strategy Officer and Managing Director  
**Strategen Consulting**

## Rhianna Patrick

Presenter and Producer  
**ABC Radio**

## Robert Raven

Head, Terrestrial Biodiversity, and Principal  
Curator, Chelicerata, Biodiversity Program  
**Queensland Museum**

## Michael Rix

ABRS Research Fellow, Natural Environment  
– Arachnids  
**Queensland Museum**

## Margaret Ross

Senior Clinical Psychologist/Chief Principal  
Investigator- Psilocybin Research  
**St Vincent's Hospital Melbourne**

## Andrew Rozefelds

Head of Geosciences  
**Queensland Museum**

## David Ryugo

Professor and Head of Hearing Research  
**Garvan Institute of Medical Research and  
School of Medical Sciences, UNSW**

## Pankaj Sah

Professor, Director  
**Queensland Brain Institute**

## Owen Seeman

Collection Manager,  
Natural Environment – Arachnids  
**Queensland Museum**

## Jane Shakespeare-Finch

Professor, School of Psychology  
and Counselling  
**QUT**

## Margaret Sheil

Vice Chancellor and President  
**QUT**

## Matt Shepit

Data Scientist  
**PwC**

## Carl Smith

Science Reporter  
**ABC Science & RN**

## Heather Smyth

Senior Research Fellow, Centre for  
Nutrition and Food Sciences, QAAFI  
**The University of Queensland**

## Tasha Stanton

Associate Professor of  
Clinical Pain Neuroscience  
**The University of South Australia**

## Michelle Taylor

Manager, Intelligent Grid Technology  
**Energy Queensland**

## Daniel Tobin

Co-Founder and Creative Director  
**UAP**

## Peter Van Onselen

Network 10 Political Editor and Professor  
of Politics and Public Policy  
**Griffith University**

## Catriona Wallace

Founder and Executive Director  
**Flamingo Ai**

## Lynette Wallworth

Environmental Advocate and Filmmaker

## Jonathan Webb

Science Editor  
**ABC**

## David Whiteman

Deputy Director and Group Leader, Cancer  
Control  
**QIMR Berghofer Medical Research Institute**

## Paul Willis

Associate Professor and CEO  
**Media Engagement Services**

## Matthew Wilson

Sherman Fairchild Professor of Neurobiology  
**Massachusetts Institute of Technology  
(MIT)**

## Michael Young

Professor, Centre for Global Food  
and Resources  
**The University of Adelaide**

A record number of regional events will take place in 2020, starting with Chinchilla in February, Gladstone in March, Toowoomba in April, Townsville in May and September, and Ipswich in June and November!

With a stellar line-up of speakers and performers, World Science Festival Queensland brings together the dynamic connection between science and our everyday world through events guaranteed to inspire and delight the young and the young-at-heart.

**For more information visit**  
**worldsciencefestival.com.au**

## Chinchilla Chinchilla Cultural Centre



### Friday 28 February

**Cool Jobs: Chinchilla**

Multiple session times | Free | Ticketed

**Cool Careers: Chinchilla**

12:30pm–1:30pm | Free | Ticketed

**City of Science for Schools: Chinchilla**

From 10:30am | Free | Ticketed

### Saturday 29 February

**Trinket the Robot: Chinchilla**

9:30am–10:15am | Free

**The Big Bang Science Show: Chinchilla**

11:30am–12pm | Free

**A Little Bit of Blue: Chinchilla**

1:15pm–2pm | Free

**Shooting Stars:**

**Astrophotography Chinchilla**

3:15pm–4:15pm | Free

**City of Science: Chinchilla**

9am–4pm | Free

Presented with Shell's QGC business



## Gladstone Gladstone Entertainment Convention Centre

### Friday 20 March

**Cool Jobs: Gladstone**

Multiple session times | Free | Ticketed

**Cool Careers: Gladstone**

12:30pm–1:30pm | Free | Ticketed

**City of Science for Schools: Gladstone**

From 10:30am | Free | Ticketed

**Science Unplugged: Gladstone**

5:30pm–6:30pm | Free | Ticketed

### Saturday 21 March

**The Big Bang Science Show: Gladstone**

10:30am–11:15am | Free | Ticketed

**Dr Karl for Kids: Gladstone**

2pm–3pm | Free | Ticketed

**Dr Karl's Great Moments in Science 2020: Gladstone**

5pm–6:30pm | Free | Ticketed

**City of Science: Gladstone**

9am–4:30pm | Free

Presented with Shell's QGC business



## Toowoomba Cobb+Co Museum



### Monday 6 April – Friday 17 April

(weekdays only, excluding Good Friday and Easter Monday)

**School Holiday Program**

**Wildlife Rangers: Animals on the Move**

Multiple session times | \$10

### Saturday 18 April

**Dr Karl for Kids: Toowoomba**

1pm–2pm | Blank Space | \$10

**Dr Karl's Great Moments in Science, 2020: Toowoomba**

7:30pm–9pm | Blank Space | \$15

### Sunday 19 April

**City of Science: Toowoomba**

9:30am–4pm | Free

**Stargazing: Toowoomba**

Multiple session times | Free | Ticketed

## Townsville Museum of Tropical Queensland

### Friday 15 May

**Cool Jobs: Townsville**

10am–11am | Free | Ticketed

**Cool Careers: Townsville**

11:30am–12:30pm | Free | Ticketed

**City of Science for Schools: Townsville**

From 11am | Free | Ticketed

### Saturday 16 May

**Shooting Stars: Astrophotography Townsville**

4pm–5pm | Tickets available soon

**Stargazing and 3D Planetarium: Townsville**

Multiple session times | Tickets available soon

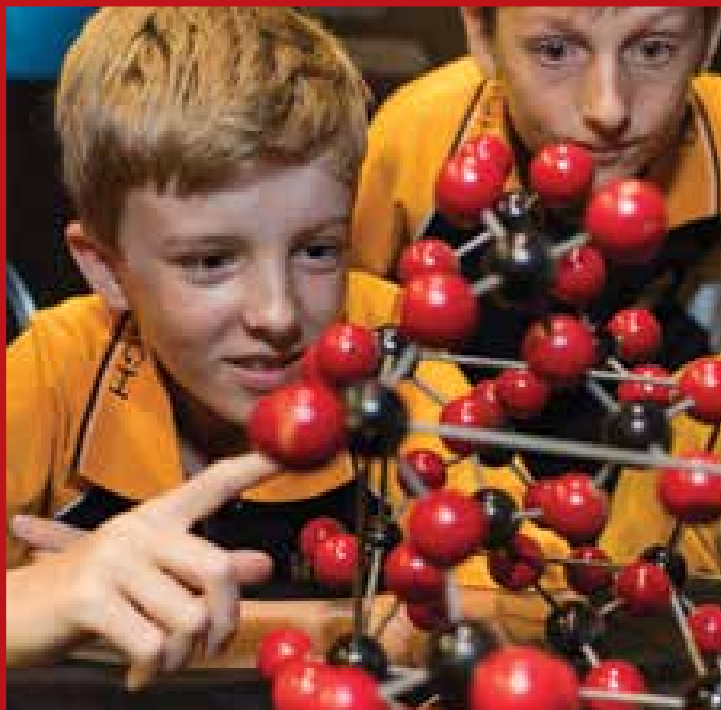
**City of Science: Townsville**

9:30am–4pm | Free

### 19 September – 5 October

**School Holiday Program**

## Ipswich The Workshops Rail Museum



### 27 June – 12 July

**School Holiday Program**

### Friday 27 November

**Cool Jobs: Ipswich**

10am–11am | Free | Ticketed

**Cool Careers: Ipswich**

11:30am–12:30pm | Free | Ticketed

**City of Science for Schools: Ipswich**

From 11am | Free | Ticketed

**World Science Festival Film Night**

6pm | Free | Ticketed

### Saturday 28 November

**City of Science: Ipswich**

9:30am–4pm | Free

**Stargazing: Ipswich**

Multiple session times | Free | Ticketed

## PRESENTED BY



## WITH SUPPORT FROM

### STRATEGIC PARTNERS



### ACADEMIC PARTNERS



### CITY OF SCIENCE PARTNER



### MEDIA PARTNERS



### PRINCIPAL PARTNERS



### COMMUNITY PARTNER



### FUTURES PARTNER



### PROGRAM PARTNERS



### OFFICIAL SUPPLIERS



Like any complex chemical compound, **World Science Festival Brisbane** is a carefully curated combination of elements.

Partnerships feature prominently in these equations, as the oxygen to our propane (the critical elements of combustion). We are serious about partnerships and dedicated to developing genuine relationships premised on shared vision, clearly articulated outcomes and measurable, mutually rewarding impact in STEM. If you are serious about partnerships, and want to take a leadership role in STEM engagement, contact us on +61 (7) 3842 9344 or email [wsfbpartners@qm.qld.gov.au](mailto:wsfbpartners@qm.qld.gov.au) to discuss the opportunities available.

## Information & Enquiries

### Phone:

Queensland Museum  
+61 7 3842 9103

### Website:

[www.worldsciencefestival.com.au](http://www.worldsciencefestival.com.au)

## Bundle 4+ Tickets and Save

**Buy a bundle of 4 or more tickets to selected events in one transaction and receive 20% off!**

Please note, this discount applies only to selected events. Visit [worldsciencefestival.com.au](http://worldsciencefestival.com.au) to find out more.

## Ticket Sales

Book online at  
[worldsciencefestival.com.au](http://worldsciencefestival.com.au)

### QTIX Ticket Sales

#### Phone:

136 246

+61 7 3842 9505 AEST  
(Outside Australia)

### Queensland Performing Arts Centre (QPAC) Box Office:

Level M

Corner Grey & Melbourne Streets  
South Brisbane, Q, 4101

9am–8:30pm, Monday to Saturday (AEST)

Please note the Box Office is open two hours prior to a scheduled performance on Sundays.

Email: [info@qtix.com.au](mailto:info@qtix.com.au)

### Queensland Museum Box Office:

Level 2

Corner Grey & Melbourne Streets  
South Brisbane, Q, 4101

9:30am–5pm, Monday to Sunday (AEST)

Patrons are encouraged to purchase their tickets online to avoid queues.

### The Safest Way to Buy

QTIX is the official ticketing service for World Science Festival Brisbane 2020. Any tickets purchased through unauthorised sales channels may be seized or cancelled without refund or exchange and the bearer of the ticket may be denied admission. Unauthorised sales channels include Viagogo, eBay and Gumtree. For more information visit the QTIX page on The Facts About Purchasing Tickets Online.

## Getting There

### Walk

to the festival located at  
Brisbane's Cultural Precinct

### Bus

to Cultural Centre Busway Station

### Train

to South Brisbane Station, opposite QPAC  
on Grey Street

### City Cat/Ferry

to South Bank Ferry Terminal in South  
Bank Parklands

**For bus, train and citycat/ferry timetable information, call TransLink on 13 12 30 or visit [translink.com.au](http://translink.com.au)**

### Taxi/Ride Share

to the taxi set-down and pick-up area  
on either the Grey Street side of QPAC  
or Stanley Place outside of State Library  
of Queensland.

### Car

via Melbourne Street, Victoria Bridge or  
Grey Street

### Parking

#### Riverside Carpark, QPAC

enter from Stanley Street

#### Art Gallery/Museum Carpark and State Library of Queensland Carpark

enter from Stanley Place

#### Brisbane Convention and Exhibition Centre

enter from Merivale Street or Grey Street

#### South Bank Parklands Carpark

enter from Little Stanley Street

## Festival Venues

### Queensland Museum

Corner Melbourne & Grey Streets,  
South Brisbane

### Queensland Performing Arts Centre (QPAC)

Corner Grey & Melbourne Streets,  
South Brisbane

### Gallery of Modern Art (GOMA) Cinematheque

Stanley Place, South Brisbane

### State Library of Queensland (SLQ)

Stanley Place, South Brisbane

### City of Science

Brisbane's Cultural Precinct

### Osmosis Stage

Maiwar Green, GOMA

### The Nucleus

Queensland Museum, Corner Melbourne  
& Grey Streets, South Brisbane

## Other Information

### Pram stations

Located throughout Brisbane's  
Cultural Precinct and at Queensland  
Museum. Limited availability. Please do  
not leave valuables in unattended areas.

### Cloakroom

Located at Queensland Museum where bags  
and backpacks can be stored.

### Information

Dedicated booths located throughout  
Brisbane's Cultural Precinct

### Food outlets

Located throughout Brisbane's  
Cultural Precinct and some festival venues.

## Tips for a Great and Sustainable day out at the Festival

You can help us reduce the  
environmental impacts of the event  
with a bit of pre-planning.

### Leave the car at home

Check out the public transport timetables  
for your area and plan your journey. If  
you can, ride a bike or a scooter!

### Bring a cup or a water refill bottle

We have free drinking water refill stations  
positioned around the City of Science.

### Use the right bin

Most food packaging on site is  
biodegradable. There are bins  
for recycling, organics (food and  
biodegradable food packaging), and  
landfill in the City of Science.

### Learn about the Sustainable Development Goals

On the streets of the City of Science  
discover how you can contribute to a  
more sustainable world.

### Return your event map

Throughout the City of Science return  
your map to one of the signage stands or  
to a volunteer in a red t-shirt so it can be  
used by another visitor.

### Celebrate Earth Hour

Outside the museum celebrate Earth  
Hour at 8:30pm on Saturday 28 March.

## Get Amongst the Action

Twitter [@WSFBrisbane](https://twitter.com/WSFBrisbane)

Facebook [@WorldScienceFestivalBrisbane](https://www.facebook.com/WorldScienceFestivalBrisbane)

Instagram [@WorldScienceFestivalBrisbane](https://www.instagram.com/WorldScienceFestivalBrisbane)

YouTube [@WorldScienceFestivalBrisbane](https://www.youtube.com/WorldScienceFestivalBrisbane)

**Share your festival memories  
using: #WSFB2020**



# WHY IS SKA SETTLE TO ROCK THE UNIVERSE?

Why is the  
answer to  
our future in  
our past?

Why do 15%  
of us think  
coriander  
tastes like  
soap?

Why do our  
cities need to  
focus on 2060?

Why does  
helium have a  
lower boiling  
point than  
water?

Why is science our  
best cricket coach?

Why does  
chocolate  
make us so  
happy?

Why do clouds turn green  
before it hails?

Discover why at  
[worldsciencefestival.com.au](http://worldsciencefestival.com.au)